

one person operation

SB Rescue Davit

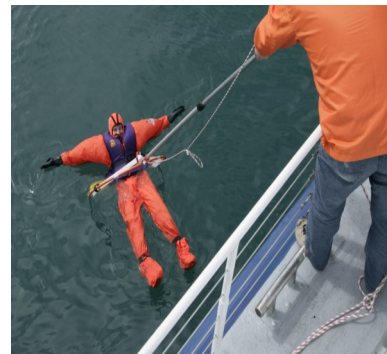
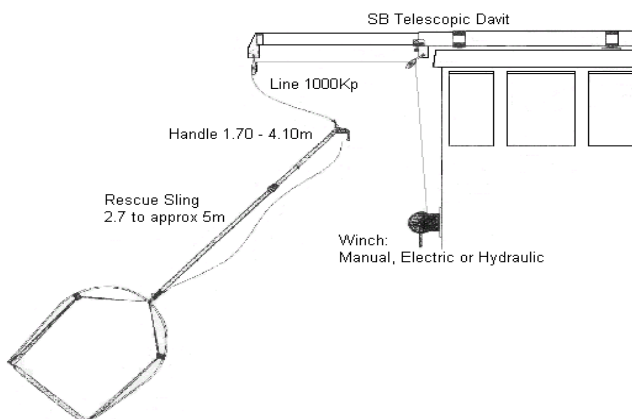
A purpose designed telescopic rescue davit suitable for new buildings and retrofit

The **SB Rescue Davit** is a telescopic, manually operated davit that may be used in conjunction with the **SB Rescue Sling** to effect a fast and efficient man-overboard recovery. It may be operated by one person.

The **SB Rescue Davit** is used by Norwegian rescue vessels, the Norwegian Navy, training establishments, police ambulance and MOB boats, as well as the Norwegian and Danish pilot authorities.



The **SB Rescue Davit** overcomes the problems of freeboard, rescuer fatigue, lack of crew numbers, and the difficulties always encountered in recovering a dead weight from the water



Place SB Rescue Sling around casualty



Bring casualty to the recovery position



Recover with the SB Rescue Davit

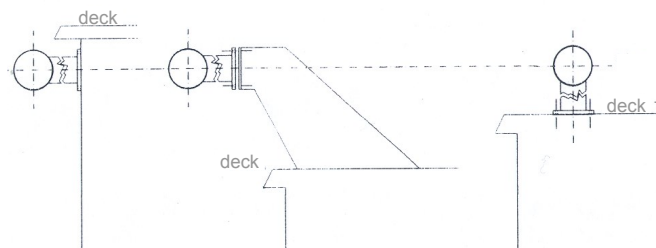
Address:
15 Moor Road
Broadstone
Dorset BH18 8AZ

Telephone:
+44 (0)1202 657814
Facsimile:
+44 (0)1202 693005

Email:
info@icbrindle.com
Websites:
icbrindle.com
rescueandrecovery.co.uk

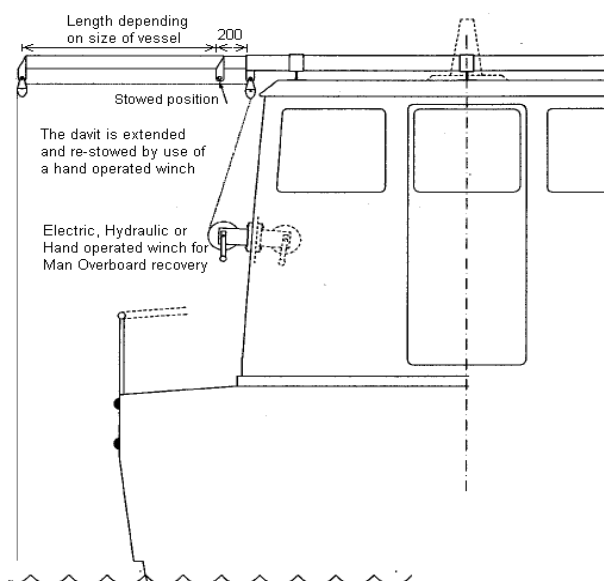
SB Rescue Davit

- The davit has an inner and an outer tube between which there are oil lubricated nylon slides.
- At the maximum extent and stowed positions a spring-loaded lock secures the davit
- Movement of the davit inner tube is by manual operation only
- The maximum reach relates to the davit length. The length of the inner tube is approximately the same as the outer tube. The total length of the davit is governed by the required reach and the area available for installation
- If recovery is required on both sides of a vessel two davits are required
- The davit may be used in conjunction with an electric, hydraulic or manually operated recovery winch
- The davit is normally manufactured from aluminium and painted white with Jotun Penguard Marine Paint



The davit may be deck or bulkhead mounted.

It may be at any height but for ease of casualty recovery it should be not less than 2200mm above the recovery deck (i.e person height + allowance for sling)



Preliminary quotation information required

- Distance from the davit location to the vessel's side.
- Height from the working deck to the davit location
- Width available at the mounting position
- Vertical distance from the mounting position to the waterline

call us now for a demonstration CD

call us now -
+44 (0)1202 657814
- it could save a life